

**Athens County, Ohio
Emergency Management Agency**

EMERGENCY OPERATIONS PLAN



EOP

ATHENS COUNTY EMERGENCY OPERATIONS PLAN
Promulgation and Introduction

PROMULGATION STATEMENT

Preparedness to cope with the effects of a disaster includes many diverse but interrelated elements, which must be woven into an integrated emergency management system involving all departments of local government and private support agencies, plus the individual citizen.

Disasters necessitate a sudden escalation in the material needs of the community and a reorganization of resources and personnel in order to address emergency response. Many lives can be lost in the confusion and disorganization that accompany the lack of a full planning effort. Therefore, failure to develop an integrated disaster preparedness plan encourages salvage activities instead of an effective coordinated damage control operation.

Planning for population protection must be a cooperative effort to avert or minimize the effects of natural, technological, civil, and/or attack-related disasters; protect lives and property; and restore the stricken area to its pre-disaster status with a minimum of disruption.

This plan is a statement of policy regarding emergency management and assigns tasks and responsibilities to county officials, department heads, and various agencies and organizations specifying their roles before, during and after an emergency or disaster situation. It is developed pursuant to the Ohio Revised Code, Sections 5502/3750, The adoption of the National Incident Management System (NIMS) and the resolution adopted by the Board of Athens County Commissioners dated April 4, 2005, assigning emergency responsibilities.

President
Board of Athens County Commissioners

Date

Athens County Commissioner

Date

Athens County Commissioner

Date

President
Alexander Township Trustees

Date

President
Ames Township Trustees

Date

ATHENS COUNTY EMERGENCY OPERATIONS PLAN
Promulgation and Introduction

President
Athens Township Trustees

Date

President
Bern Township Trustees

Date

President
Canaan Township Trustees

Date

President
Carthage Township Trustees

Date

President
Dover Township Trustees

Date

President
Lee Township Trustees

Date

President
Lodi Township Trustees

Date

President
Rome Township Trustees

Date

President
Trimble Township Trustees

Date

President
Troy Township Trustees

Date

President
Waterloo Township Trustees

Date

ATHENS COUNTY EMERGENCY OPERATIONS PLAN
Promulgation and Introduction

President
York Township Trustees

Date

Mayor
City of Athens

Date

City Manager
City of Nelsonville

Date

Mayor
Village of Albany

Date

Mayor
Village of Amesville

Date

Mayor
Village of Buchtel

Date

Mayor
Village of Chauncey

Date

Mayor
Village of Coolville

Date

Mayor
Village of Glouster

Date

Mayor
Village of Jacksonville

Date

Mayor
Village of Trimble

Date

ATHENS COUNTY EMERGENCY OPERATIONS PLAN
Promulgation and Introduction

FOREWORD

This plan provides for a systematic approach to the solution of problems created by the threat or the occurrence of disasters in Athens County, Ohio. It identifies the responsibilities, functions, operational procedures, and working relationships between and within the governmental entities and their various departments, private support groups, and individual citizens.

This Athens County EOP was jointly developed by the Director of the Athens County Emergency Management Agency (EMA), in cooperation with representatives from departments and jurisdictions that have been tasked with emergency responsibilities. The first step in the planning process identified each hazard that is a possible threat to the county and provided the basis for the basic plan (BP) and the functional annexes. The second step assessed the resources of each governmental entity and the third step was to develop individual standard operating procedures (SOPs) based solely on those resources, which will be provided to the EMA.

The goals to be achieved are to save lives and protect property by developing programs and emergency operational capabilities that address mitigation, preparedness, response, and recovery for natural, industrial, technological, civil, or attack-related emergencies.

Regular review of the EOP as well as emergency test, exercises, and actual emergency occurrences will serve to refine and clarify emergency responsibilities and contribute to the ongoing planning process initiated by the responsible organizations which developed this document.

We would like to express our appreciation to these individuals and organizations. Their input was instrumental in creating an EOP for the protection of the citizens and property of Athens County. All required signatures of those assisting with the creation of this plan are on file in the Athens County Emergency Operations Center (EOC).

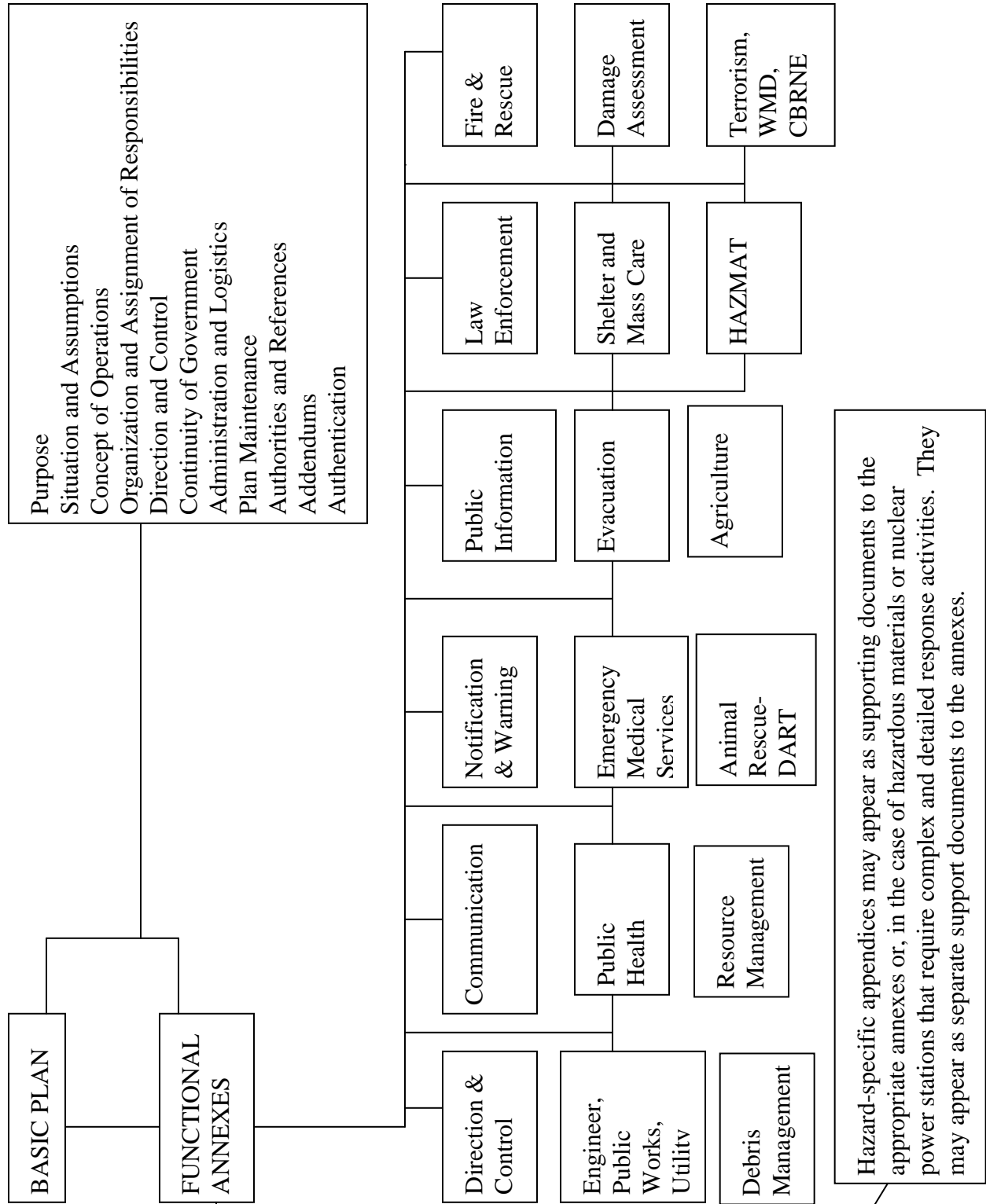
Fred Davis
County Emergency Management Director

Date

ATHENS COUNTY EMERGENCY OPERATIONS PLAN

Promulgation and Introduction

ABSTRACT OF EMERGENCY OPERATIONS PLAN



ATHENS COUNTY EMERGENCY OPERATIONS PLAN
Promulgation and Introduction

TABLE OF CONTENTS

PROMULGATION STATEMENT I

FOREWORD..... IV

ABSTRACT OF EMERGENCY OPERATIONS PLAN V

HAZARDS IDENTIFICATION..... VIII

CONTROLLED DISTRIBUTION LIST X

RECORD OF CHANGES..... XI

DEFINITION OF TERMS..... XII

DEFINITIONS OF ACRONYMS ERROR! BOOKMARK NOT DEFINED.

INSTRUCTIONS ON PLAN USEXXVII

BASIC PLANBP-ERROR! BOOKMARK NOT DEFINED.

DIRECTION AND CONTROL ANNEXA-ERROR! BOOKMARK NOT DEFINED.

COMMUNICATIONS ANNEXB-ERROR! BOOKMARK NOT DEFINED.

NOTIFICATION AND WARNING ANNEXC-ERROR! BOOKMARK NOT DEFINED.

PUBLIC INFORMATION ANNEXD-ERROR! BOOKMARK NOT DEFINED.

ATHENS COUNTY LAW ENFORCEMENT ANNEX E-ERROR! BOOKMARK NOT DEFINED.

FIRE AND RESCUE ANNEX..... F-ERROR! BOOKMARK NOT DEFINED.

ENGINEERING, UTILITY AND PUBLIC WORKS ANNEXG-ERROR! BOOKMARK NOT DEFINED.

PUBLIC HEALTH ANNEXH-ERROR! BOOKMARK NOT DEFINED.

MEDICAL ANNEX I-ERROR! BOOKMARK NOT DEFINED.

EVACUATION ANNEXJ-ERROR! BOOKMARK NOT DEFINED.

SHELTER AND MASS CARE ANNEXK-ERROR! BOOKMARK NOT DEFINED.

DAMAGE ASSESSMNET ANNEX..... L-ERROR! BOOKMARK NOT DEFINED.

TERRORISM, WMD, CBRNE SITUATION.....M-ERROR! BOOKMARK NOT DEFINED.

DEBRIS MANAGEMENTN-ERROR! BOOKMARK NOT DEFINED.

HAZMAT.....O-ERROR! BOOKMARK NOT DEFINED.

RESOURCE MANAGEMENT.....P-1

ANIMAL RESCUEQ-1

AGRICULTURE.....R-1

ATHENS COUNTY EMERGENCY OPERATIONS PLAN
Promulgation and Introduction

ATHENS COUNTY EMERGENCY OPERATIONS PLAN

Promulgation and Introduction

HAZARDS IDENTIFICATION

A hazards identification for Athens County has been completed and hazards that could affect all or parts of the county have been identified and analyzed. The results of this identification and analysis were used as the basis for developing the EOP and revealed that:

- A. Winter storms could affect the entire county at the same time. This type of emergency poses a most difficult response effort because of road conditions, which impede or prohibit vehicle movement.
- B. Energy emergencies (interruptions of the sources and/or transmission of energy supplies) could negatively impact on the lives and property of county residents. Sudden and widespread loss of electrical power, natural gas, and/or phone service could have consequences, which could reach a disastrous scale, especially during periods of intense cold weather. Interruptions in other heating sources could cause problems but would likely have longer onset and would be more manageable.
- C. Floods threaten many of the political subdivisions in the county. Additional problems may occur from urban flooding with associated high water problems from lack of adequate drainage, such as flooded streets, basements, etc. A map indicating areas susceptible to flooding is on file and can be found in the Emergency Management Office.
- D. Hazardous materials (HAZMAT) releases could occur in the county, with large-scale incidents likely to occur along the several road, rail, water, air, and pipeline routes, which traverse the county along with a few facilities where substantial amounts of HAZMAT are used and/or stored. Such incidents could result in fires, explosions, mass casualty and/or mass evacuation situations. Transportation routes can be found on file in the Emergency Management Office.
- E. Tornados and severe storms could occur anywhere in the county. Damage and loss of life could be severe and overwhelm the ability of local responders to address the emergency. A map detailing tornado activity in Ohio between 1950 and 1992 can be found in the Emergency Management Office.
- F. Earthquakes could affect the entire county, although at different levels of damage. Athens County falls within the area predicted to receive minor damage during worst-case disturbances along the New Madrid Fault in Missouri. A map of fault lines is available in the Resource Manual.
- G. Pipelines carrying oil and gas could rupture or explode. Experts agree that the greatest cause of accidents involves a farmer or a contractor digging nearby and accidentally striking a line. A map is on file in the Emergency Management Office.

ATHENS COUNTY EMERGENCY OPERATIONS PLAN
Promulgation and Introduction

- H. Wildfires are also a concern. Part of the Wayne National Forest and other wooded areas are located in Athens County. Many wildfires occur during the fall season because the vegetation is dying and leaves are accumulating. Curing of these fuels takes place throughout the winter and an even more critical forest fire period is experienced until spring green-up occurs. Extended periods with little rainfall can compound the problem.
- I. Terrorist incidents may occur in Athens County. Organized crime does operate within Ohio according to the Buckeye Sheriffs Association. A listing of vulnerable areas is maintained by the Athens County Sheriff's office.
- J. Water shortages could occur but would possibly not be county-wide. Shortages may occur as a result of drought or contamination and inadequate systems of delivery (including power outages).
- K. Transportation incidents are of a serious nature and could result in long-range effects, especially when HAZMATS are involved.
- L. There are five Class I Dams in Athens County. (Dams having a storage volume of greater than 5,000 acre-feet or a height of greater than 60 feet are classified as Class I Dams. In addition, when failure of a dam would result in the probable loss of human life or present a serious hazard to health, damage to homes, high value industrial or commercial properties or major public utilities, the dams shall be placed in the Class I category). A map indicating Class I Dams in the county is located in the Resource Manual in the Emergency Management Office.
- M. Nuclear attack will be possible as long as nuclear weapons exist. Based on reasonably expected targeting data, most of the county has been designated as a host area, which will be expected to receive up to approximately 150,000 persons from risk areas, including 2,200 from risk areas in the county. Host areas within the county lie west of a north-south line running through the center of Ames, Canaan, and Lodi townships. The remaining area of the county is designated as "shelter-in-place" with the exception of Troy Township and the five eastern-most sections of Rome Township, which are risk (or evacuation) areas. Information regarding these areas is available in the Emergency Management Office.
- N. Civil disorders could affect the county. Their effects would probably be limited to the cities and would most likely emerge from labor strikes, student protests, or hate groups.
- O. Landslides, mine-slides, and subsidence are identifiable hazards in Southeastern Ohio Counties. A list of areas at risk can be found with the Ohio Department of Natural Resources, and also at the Soil and Water Department of Athens County.
- P. Low-level radioactive waste is a consideration in Athens County as summarized in the Resource Manual in the Emergency Management Office.

ATHENS COUNTY EMERGENCY OPERATIONS PLAN
Promulgation and Introduction

CONTROLLED DISTRIBUTION LIST

AGENCY/ ORGANIZATION	EOP NUMBERED COPY (IES) RECEIVED
BOARD OF COUNTY COMMISSIONERS	
ATHENS COUNTY EMERGENCY MANAGEMENT AGENCY	
STATE OF OHIO EMERGENCY MANAGEMENT AGENCY	
ANNEX COORDINATORS:	
Direction and Control	
Communications	
Notification and Warning	
Emergency Public Information	
Law Enforcement	
Fire and Rescue	
Engineering and Public Works	
Public Health	
Medical	
Evacuation	
Shelter and Mass Care	
Damage Assessment	
Radiological Protection	
Resource Management	
Hazardous Materials/ LEPC	
MAIN PUBLIC LIBRARY	

EACH INDIVIDUAL, AGENCY, OR ORGANIZATION HAVING AN OFFICIAL COPY OF TH PLAN SHOULD BE LISTED ABOVE. WHEN REVISIONS ARE MADE, THE EMERGENCY MANAGEMENT COORDINATOR WILL USE THIS LIST IN DISTRIBUTING REVISED PAGES. A REVISION CONTROL FORM, ALONG WITH THE REVISED PAGES, SHOULD BE SENT FOR THE RECEIVER TO SIGN AND RETURN TO THE COORDINATOR TO ACKNOWLEDGE THAT THE REVISIONS WERE RECEIVED.

**ATHENS COUNTY EMERGENCY OPERATIONS PLAN
Promulgation and Introduction**

RECORD OF CHANGES

Changes are to be filed behind this page and in front of the first page of the basic plan.

Change Number and Date	Synopsis of Change (Page, Paragraph, Tab, Appendix, Annex, etc.)	Date Posted	Signature of Person Posting Change
#1 12/14/06	Page BP-2 added paragraph 11 (NIMS, ICS, UCS)	12/14/06	
#2 05/31/13	Up dated entire EOP, correcting grammar, adding flow charts and any info requested from responsible jurisdictions.	06/14/13	
#3 08/01/13	Revised Annexes H & I to incorporate the Integrated Healthcare Plan.		

ATHENS COUNTY EMERGENCY OPERATIONS PLAN
Promulgation and Introduction

DEFINITION OF TERMS

Air Burst: The explosion of a nuclear weapon at such a height that the expanding fireball does not touch the earth's surface resulting in little or no fallout.

Allocation (General): (Community Shelter Planning) The process of allocating areas of population to areas of shelter concentration.

Allocation (Specific): (Community Shelter Planning) The process of allocating geographically defined areas of population to a specific shelter facility or group of shelter facilities.

American Red Cross (ARC): A quasi-governmental agency largely for relief of suffering and welfare activities during war and disaster. The ARC operates under a Congressional charter and is supported by the people. Internationally, it operates in accordance with the Treaty of Geneva.

Animal: Any animal that is a bird, reptile, amphibian, fish, or mammal, other than humans.

Annex: As used in this plan, an element that is devoted to one function of emergency operations and describes the county's approach to operating in that activity in response to emergencies.

Appendix: Attachment to an annex providing technical information, details, methods, and/or hazard-specific procedures to that annex.

Attack Warning: A civil defense warning that an actual attack against this country has been detected.

Blast Wave: A sharply defined wave of increased pressure rapidly propagated through a surrounding medium from a center of detonation or similar disturbance.

Census Tract: A non-political, geographical subdivision of no standard size, but within a city, town, county, or other political jurisdiction; it is used by the U.S. Bureau of Census as a convenient and flexible unit for surveying and aggregating population, housing, and other demographic or economic statistics. In most instances, a tract corresponds to Standard Location Area.

Class I Dam: See Dams, Class I

Code of Federal Regulations: Title 44, refers to Emergency Management and Assistance. Civil Defense.

ATHENS COUNTY EMERGENCY OPERATIONS PLAN
Promulgation and Introduction

Comprehensive Emergency Management: An all-inclusive approach in combining the four phases of emergency management, which are:

- (1) Mitigation: those activities which eliminate or reduce the probability of disaster;
- (2) Preparedness: those activities which governments, organizations, and individuals develop to save lives and minimize damage;
- (3) Response: to prevent loss of lives and property and provide emergency assistance; and
- (4) Recovery: short and long-term activities which return all systems to normal or improved standards.

Congregate Care Facilities: Public or private buildings in the host areas that may be used to lodge and care for evacuees. Generally, assigned space is approximately 40 square feet per person. The facility may or may not meet criteria for designation as “fallout shelter.”

Critical Worker: See “Worker.”

Dams, Class I: Dams having a storage volume greater than 5,000 acre-feet or a height of greater than 60 feet, or when failure of a dam would result in the probable loss of human life or present a serious hazard to health, damage to homes, high value industrial or commercial properties or major public utilities.

Damage Assessment: The appraisal or determination of the actual effects resulting from conventional or nuclear bombs and missiles.

Dangerously Contagious or Infectious Disease: Any disease, including any foreign animal disease, or vector, that the director of agriculture, in his/her sound discretion, determines to be of harmful effect on the animal or poultry industry or the public health and to be capable of transmission by any means from a carrier animal to a human or to another animal.

Disaster/ Emergency: An event that causes or threatens to cause loss of life, human suffering, property damage, economic and social disruption.

Disaster Assistance Center: A local center established following a major disaster, staffed by various state and federal agencies to provide assistance to individuals.

Distant Early Warning Line (DEW Line): A network of radar stations near the Arctic Circle.

Domestic Animal: Includes livestock; other animals that through long association with humans have been bred to a degree resulting in genetic changes affecting the temperament, color, conformation, or other attributes of the species to an extent that makes them different from non-domestic animals of their kind and other animals.

ATHENS COUNTY EMERGENCY OPERATIONS PLAN
Promulgation and Introduction

Dose: A quantity (total or accumulated) of ionizing (or nuclear) radiation, experienced by a person or animal.

Dose Rate: As a general rule, the amount of ionizing (or nuclear) radiation to which an individual would be exposed, or which he would receive per unit of time.

Dosimeter: An instrument for measuring and registering total accumulated exposure to ionizing radiations.

Dosimeter Charger: An instrument used to reset a dosimeter to a beginning or zero reading.

ECC: Emergency Communication Center

Electromagnetic Pulse (EMP): Energy radiated by nuclear detonation which may affect or damage electronic components and equipment.

Emergency Alert System (EAS): Consists of broadcast stations and interconnecting facilities which have been authorized by the Federal Communications Commission to operate in a controlled manner during a war, state of public peril or disaster, or other national emergency (as provided by the Emergency Alert System Plan).

Emergency Management Assistance: (Formerly P & A) Federal matching funds to state and local agencies for personnel and administrative expense.

Emergency Management Director/ Coordinator: The individual who is directly responsible on a day-to-day basis for the jurisdiction's effort to develop a capability for coordinated response to and recovery from the effects of attack-related and other large-scale disasters.

Emergency Operations Center (EOC): The site from which government officials exercise direction and control during emergencies.

Emergency Operations Plan (EOP): A document that identifies the available personnel, equipment, facilities, supplies, and other resources in the jurisdiction and states the method or scheme for coordinated actions to be taken by individuals and government services in the event of natural, man-made, and attack-related disasters. It describes a jurisdiction's emergency organization and its means of coordination with other jurisdictions. It assigns functional responsibilities to the elements of the emergency organization, and it details tasks to be carried out at times and places projected as accurately as permitted by the nature of each situation addressed.

Evacuee: The individual who is moved to a less-hazardous area. Also, may be referred to as a relocatee.

ATHENS COUNTY EMERGENCY OPERATIONS PLAN
Promulgation and Introduction

Executive Order (EO): A rule or order having the force of law, issued by an executive authority of a government.

Fallout: Particles of radioactive dust that descend to earth following ground-level detonation of a nuclear warhead.

Foreign Animal Disease: A contagious or infectious disease that is not present in United States domestic or non-domestic species populations and is listed by the United States Department of Agriculture as a “foreign animal disease.”

Functional Area Annex Coordinator: Person with overall responsibility for coordinating actions within a particular area, i.e., the County Sheriff is the County Law Enforcement Coordinator.

Functions of Emergency Management: Direction and Control Communications, Warning, Emergency Public Information (EPI), Evacuation, Reception and Care, Shelter, Health and Medical, Law Enforcement, Public Works, Fire and Rescue, Radiological Protection, Human Services, Resource Management, Damage Assessment (Re: FEMA CPG 1-8).

Geographic Area: Any county or counties within this state or parts thereof as may be designated by the director.

Greenwich Mean Time (GMT) or (Z): (also called “ZULU” Time for Zero Meridian) The standard reference time used throughout the world based on the time at the Royal Observatory in Greenwich, England. Using the 24-hour system to convert to Greenwich Time:

Add 5 hours to Eastern Standard Time (EST)	- (4 for EDT)
Add 6 hours to Central Standard Time (CST)	- (5 for CDT)
Add 7 hours to Mountain Standard Time (MST)	- (6 for MDT)
Add 8 hours to Pacific Standard Time (PST)	- (7 for PDT)

Ground Zero (GZ): The point on the surface of land or water vertically below or above the center of a burst of a nuclear weapon.

Hazard: A potential event or situation that presents a threat to life and property.

Hazardous Material (HAZMAT): Any substance or material in a quantity or form which may be harmful or injurious to humans, domestic animals, wildlife, economic crops, or property when released into the environment. Hazardous materials are classified in this plan as chemical, biological, radiological, or explosive.

ATHENS COUNTY EMERGENCY OPERATIONS PLAN
Promulgation and Introduction

Chemical: Toxic, corrosive, or injurious substance because of inherent chemical properties and includes but is not limited to such items as petroleum products, paints, plastics, acids, caustics, industrial chemicals, poisons, drugs, mineral fibers (asbestos).

Biological: Microorganisms or associated products which may cause disease in humans, animals, or economic crops and includes pathogenic wastes from medical institutions, slaughterhouses, poultry processing plants, and the like.

Radiological: Any radioactive substance emitting ionizing radiation at a level to produce a health hazard.

Explosive: Material capable of releasing energy with blast effect in a split second upon activation; the released energy usually damages or destroys objects in close proximity to the blast.

Hazard-Specific Appendix: A document attached to an annex of an EOP or appearing at the end of an EOP that describes emergency activities that take place only for a specific hazard. The actions cannot be addressed generically.

High-Altitude Burst: This is defined, somewhat arbitrarily, as a detonation at an altitude over 100,000 feet. Above this level, the distribution of the energy from the explosion between blast and thermal radiation changes appreciably with increasing altitude due to changes in the fireball phenomena.

Host Area: A specified area relatively unlikely to experience direct weapons effects (blast of a 2 psi or more, heat and initial nuclear radiation) from a nuclear attack and designated for reception and care of risk area evacuees.

Incident: An event or occurrence with potential threat to the health and safety of residents in the vicinity; may also result in physical damage to properties and facilities.

Ion: An atom which bears an electrical charge, either positive or negative.

Ionization: The process by which ions are produced.

Isotope: Atoms which have the same atomic number of protons, but different atomic mass or mass number. Isotopes of a particular element have almost identical properties.

Local Warning Point: A facility in a city, town, or community which receives warnings and activates the public warning system in its area of responsibility.

Major Disaster: Public Law 93-288 as amended, provides that any flood, drought, fire, hurricane, earthquake, storm, or other catastrophe in any part of the United States which, in the determination of the President, is or threatens to be of sufficient severity and

ATHENS COUNTY EMERGENCY OPERATIONS PLAN

Promulgation and Introduction

magnitude to warrant disaster assistance by the Federal Government to supplement the efforts and available resources of State and local governments in alleviating the damage, hardship, or suffering caused thereby.

Megaton Energy (MT): The energy of a nuclear (or atomic) explosion which is equivalent to 1,000,000 tons (or 1,000 kilotons) of TNT.

National Shelter Survey (NSS): The analysis of existing large buildings and sub-surface enclosures by architects and engineers qualified in fallout shelter analysis to identify protected space suitable for use as public fallout shelters.

National Plan: Short title for the National Plan for Emergency Preparedness which sets forth the basic principles, policies, responsibilities, preparations, and response of civil government to meet any kind of national defense emergency.

National Warning Center (NAWAS): The facility staffed by Attack Warning Officers situated within the combat operations center at NORAD Headquarters. Controls NAWAS when the Regional Warning Circuits are tied together.

Non-Domestic Animal: Any animal that is not domestic, including at least non-indigenous animals and animals usually not in captivity.

Nuclear Radiation: Particulate and electromagnetic radiation emitted from atomic nuclei in various nuclear processes. The important nuclear radiations, from the weapons standpoint, are alpha and beta particles, gamma rays, and neutrons.

Nuclear Weapon (or Bomb): A general name given to any weapon in which the explosion results from the energy released by reactions involving atomic nuclei, either fission or fusion.

Operations Planning: Determining the need for application of resources and determining the methods of obtaining and committing these resources to the operations plan.

Peak Population: As used in the National Fallout Shelter Survey, the maximum population occupying a Standard Location area at any given time on a normal weekday. The peak population of a city or other area that includes more than one Standard Location area is a summation of the peak populations for each of the Standard Location areas.

Daytime Peak: Maximum population occurring during daylight hours (8 am-6 pm).

Nighttime Peak: Maximum population occurring during nighttime hours (6 pm-8 am).

PL 81-920: Federal Civil Defense Act of 1950 provides a system of civil defense for the protection of life and property in the United States from attack. The same act also established a Federal Agency to be responsible for a National Civil Defense Program.

ATHENS COUNTY EMERGENCY OPERATIONS PLAN
Promulgation and Introduction

Political Subdivisions: Local governments, including but not limited to cities, towns, incorporated communities, counties, parishes, and townships.

Population Protection Planning (PPP): A program that provides for the development, exercising, and maintenance of single, generic plan that contains annexes which assign tasks and detail procedures for coping with the effects of natural disasters, technological hazards, and nuclear attack.

Poultry: Any domesticated fowl kept in confinement, except for doves and pigeons, that are bred for the primary purpose of producing eggs or meat for human consumption; includes chickens, turkeys, waterfowl, and game birds.

Protection Factor (PF): A number used to express the relation between the amount of fallout gamma radiation that would be received by a person in a completely unprotected location and the amount that would be received by a person in a protected location.

Radiation: The emission and propagation of energy through space or through a material medium in the form of waves; as electromagnetic and sound or elastic waves, and corpuscular emissions.

Radiation Exposure Record: The card issued to individuals for recording their personal radiation exposure dose.

Radioactivity: The liberation of energy by spontaneous disintegration of nuclei.

Radio Amateur Civil Emergency Services (AMATEUR RADIO): An emergency service designed to make efficient use of the vast reservoir of skilled radio amateurs throughout the Nation in accordance with approved civil defense communications plans. Many of the States and local governments have federally approved AMATEUR RADIO communications plans whereby radio amateurs participating in these plans are permitted to operate during an emergency, or emergency conditions.

Radiological Monitor (RM): An individual trained to measure, record, and report radiation dose and dose rates; provide limited field guidance on radiation hazards associated with operations to which he is assigned; and perform operator's maintenance of radiological instruments.

Radiological Monitoring: The procedure or operation of locating and measuring radioactive contamination by means of survey instruments which can detect and measure (as dose rates) ionizing radiations. The individual performing the operation is called a monitor.

Residue: Any poisonous or deleterious pesticide governed by 40 C.F.R. 180, any poisonous or deleterious substance governed by 21 C.F.R. 109.6, or any other substance governed by 21 C.F.R. 556.

ATHENS COUNTY EMERGENCY OPERATIONS PLAN
Promulgation and Introduction

Seal: Any band or object made of metal, plastic, or other material placed on a vehicle or other means of conveyance so that when the vehicle or conveyance is opened, the band or object is affected, altered or broken.

Secondary Effects: Emergencies that may develop as a reaction to an initiating emergency. For example, a dam may break as a result of an earthquake.

Shelter, Expedient: A group fallout shelter constructed on a crash basis in a period of crisis.

Shelter, Fallout: A habitable structure of space used to protect its occupants from fallout radiation.

Shelter, Improvised: Any shelter constructed in an emergency or crisis period by individuals or single families, usually in or near their homes.

Standard Operating Procedures (SOP): Checklists or guidance developed by each specific responding organization that detail responsible individuals by name, phone number, and delineate in detail specific organizational emergency activities.

Surface Burst: The explosion of a nuclear weapon at the surface of the land or water or at a height above the surface less than the radius of the fireball at maximum luminosity (in the second thermal pulse). An explosion in which the weapon is detonated actually on the surface is called a contact surface burst, or true surface burst resulting in fallout.

Tabs: Maps, charts, checklists, resources, inventories, sample forms, and diagrams used to support the basic plan, annexes and appendices.

Traffic Control Points (TCP): Places along evacuation routes that are manned by law enforcement personnel to direct and control movement to and from the area being evacuated.

Vector: A disease carrier, usually from, but not limited to, the arthropod class, which transfers an infectious agent that may transmit a dangerously contagious or infectious disease from one host to another.

Warning Point: A facility that receives warnings and other emergency information over NAWAS and relays this information in accordance with State and local Civil Defense plans.

Worker-Critical: An individual whose skills or services are required to continue operations of vital facilities and activities that will provide goods and services to the relocated population and host county residents, or insure continuance of the nation's production capabilities and preservation of the economic system.

ATHENS COUNTY EMERGENCY OPERATIONS PLAN
Promulgation and Introduction

ACRONYMS

AAR/BOE	Association of American Railroads/Bureau of Explosives
ACE	Army Corp of Engineers
ACCDH	Athens City/ County Health Department
ACEMA	Athens County Emergency Management Agency
ACLEPC	Athens County Local Emergency Planning Committee
ACEMS	Athens County Emergency Medical Service
AFB	Air Force Base
AG	Attorney General
AMS	Aerial Measuring System
ANSIR	Awareness of National Security Issues and Response Program
ARAC	Atmospheric Release Advisory Capability
ARC	American Red Cross
ARES	Amateur Radio Emergency Service
ARG	Accident Response Group
ARS	Agriculture/Research Service
ATC	Air Traffic Control
ASD(CS)	Assistant to the Secretary of Defense for Civil Support
ATSDR	Agency for Toxic Substances
BDC	Bomb Data Center
CAA	Clean Air Act
CAS	Chemical Abstract System
CAER	Community Awareness & Emergency Response
CBIAC	Chemical and Biological Defense Information and Analysis Center
CBRNE	Chemical, Biological, Radiological, Nuclear Material, or High-Yield Explosive
CDC	Centers for Disease Control and Prevention
CDRG	Catastrophic Disaster Response Group
CEO	Chief Executive Officer
CEPP	Chemical Emergency Preparedness Program
CEPPO	Chemical Emergency Preparedness and Prevention Office
CERCLA	Comprehensive Environmental Response, Compensation, and Liability Act

ATHENS COUNTY EMERGENCY OPERATIONS PLAN
Promulgation and Introduction

CFR	Code of Federal Regulations
CHEMNET	Chemical Network
CHEMTREC	Chemical Transportation Emergency Center
CHLOREP	Chlorine Emergency Plan
CHPPM	Center for Health Promotion and Preventive Medicine
CHRIS	Chemical Hazards Response Information System
CIRG	Crisis Incident Response Group
CJCS	Chairman of the Joint Chiefs of Staff
CM	Consequence Management
CMA	Chemical Manufacturer's Association
CMU	Crisis Management Unit (CIRG)
CRU	Crisis Response Unit
CSREES	Cooperative State Research, Education and Extension Service
CST	Civil Support Teams
CWA	Clean Water Act
CW/CBD	Chemical Warfare/Contraband Detection
DA	Damage Assessment
DAC	Disaster Assistance Center
DEST	Domestic Emergency Support Team
DFO	Disaster Field Office
DMAT	Disaster Medical Assistance Team
DMCR	Disaster Management Central Resource
DMORT	Disaster Mortuary Operational Response Team
DOC	Department of Commerce
DOC	Disaster Operations Center (ARC)
DOD	Department of Defense
DOE	Department of Energy
DOJ	Department of Justice
DPP	Domestic Preparedness Program
DTCTPS	Domestic Terrorism/Counter Terrorism Planning Section (FBI HQ)
DTIC	Defense Technical Information Center
EAS	Emergency Alert System

ATHENS COUNTY EMERGENCY OPERATIONS PLAN
Promulgation and Introduction

ECC	Emergency Communications Center
EHS	Extremely Hazardous Substances
EM	Emergency Management
EMA	Emergency Management Agency
EMI	Emergency Management Institute
EMP	Electromagnetic Pulse
EMS	Emergency Medical Services
EMT	Emergency Medical Technician
EOC	Emergency Operations Center
EOP	Emergency Operations Plan
EPA	Environmental Protection Agency
EPCRA	Emergency Planning and Community Right-to Know Act
ER	Emergency Room
ERT	Emergency Response Team (FBI)
ERT-A	Emergency Response Team – Advance Element
ERTU	Evidence Response Team Unit
ESF	Emergency Support Function
EST	Emergency Support Team
EU	Explosives Unit
FAA	Federal Aviation Administration
FBI	Federal Bureau of Investigation
FEMA	Federal Emergency Management Agency
FEST	Foreign Emergency Support Team
FNS	Food and Nutrition Service
FRERP	Federal Radiological Emergency Response Plan
FRMAC	Federal Radiological Monitoring and Assessment Center
FRC	Fire & Rescue Coordinator
FRP	Federal Response Plan
FS	Forest Service
GZ	Ground Zero
HAZMAT	Hazardous Materials
HHS	Department of Health and Human Services

ATHENS COUNTY EMERGENCY OPERATIONS PLAN
Promulgation and Introduction

HIT	Hazard Information Transmission
HMRU	Hazardous Materials Response Unit
HMTA	Hazardous Materials Transportation Act
HQ	Headquarters
HRT	Hostage Rescue Team (CIRG)
HTIS	Hazardous Technical Information Services (DOD)
IC	Incident Commander
ICS	Incident Command System
IDLH	Immediately Dangerous to Life/Health
IEMS	Integrated Emergency Management System
IND	Improvised Nuclear Device
JFO	Joint Field Office
JFS	Job and Family Services (Athens County Department of)
JOC	Joint Operations Center
JPIC	Joint Public Information Center
JTF-CS	Joint Task Force for Civil Support
LC	Lethal Concentration
LC50	Median Lethal Concentration
LCLO	Lethal Concentration Low
LD	Lethal Dose
LDLO	Lethal Dose Low
LD50	Median Lethal Dose
LEPC	Local Emergency Planning Committee
LFA	Lead Federal Agency
LLNL	Lawrence Livermore National Laboratory
LOC	Level of Concern
MEDCOM	Medical Command
MMRS	Metropolitan Medical Response System
MOA	Memorandum of Agreement
MOU	Memorandum of Understanding
MSCA	Military Support to Civil Authorities
MSDS	Material Safety Data Sheet

ATHENS COUNTY EMERGENCY OPERATIONS PLAN
Promulgation and Introduction

NAP	Nuclear Assessment Program
NAWAS	National Warning System
NBC	Nuclear, Biological, and Chemical
NCP	National Oil and Hazardous Substances Pollution Contingency Plan
NDMS	National Disaster Medical System
NDPO	National Domestic Preparedness Office
NEST	Nuclear Emergency Search Team
NETC	National Emergency Training Center
NFA	National Fire Academy
NFS	National Facility Survey (FEMA)
NHMIE	National Hazardous Material Information Exchange
NIOSH	National Institute of Occupational Safety and Health
NMRT	National Medical Response Team
NOAA	National Oceanic and Atmospheric Administration
NRC	Nuclear Regulatory Commission
NRT	National Response Team
NSC	National Security Council
NSDD	National Security Decision Directive
NTIS	National Technical Information Service
OAC	Ohio Administrative Code
ODNR	Ohio Department of Natural Resources
ODOT	Ohio Department of Transportation
OEP	Office of Emergency Preparedness
OFCM	Office of the Federal Coordinator for Meteorology
OHIO EMA	Ohio Emergency Management Agency
OHIO EPA	Ohio Environmental Protection Agency
OIG	Office of the Inspector General (USDA)
ONG	Ohio National Guard
ORC	Ohio Revised Code
OSC	On-Scene Commander
OSHA	Occupational Safety & Health Administration
OSLDPS	Office for State and Local Domestic Preparedness Support

ATHENS COUNTY EMERGENCY OPERATIONS PLAN
Promulgation and Introduction

OSP	Ohio State Patrol
OSU	Ohio State University
OU	Ohio University
PDD	Presidential Decision Directive
PHS	Public Health Service
PIO	Public Information Officer
POC	Point of Contact
PSI	Pounds per Square Inch
PT	Preparedness, Training, and Exercises Directorate (FEMA)
PUCO	Public Utilities Commission of Ohio
QR	Rate of Release of EHS to Air
QS	Maximum Amount of Chemical that can be release
R&D	Research and Development
RAP	Radiological Assistance Program
RCRA	Research Conservation and Recovery Act
RDD	Radiological Dispersal Device
REAC/TS	Radiation Emergency Assistance Center/Training Site
ROC	Regional Operations Center (DOD or FEMA)
RQ	Reportable Quantity
RRIS	Rapid Response Information System (FEMA)
RRT	Regional Response Team
SAC	Special Agent in Charge (FBI)
SARA	Superfund Amendments and Reauthorization Act
SBCCOM	Soldier and Biological Chemical Command (U.S. Army)
SCBA	Self-Contained Breathing Apparatus
SEB	State Emergency Board
SERC	State Emergency Response Commission
SIOC	Strategic Information and Operations Center (FBI HQ)
SLG	State and Local Guide
SOP/SOG	Standard Operating Procedure/Guidelines
STEL	Short-Term Exposure Limit
STIL	Short-Term Inhalation Limit

ATHENS COUNTY EMERGENCY OPERATIONS PLAN
Promulgation and Introduction

TCP	Traffic Control Point
TIA	Terrorist Incident Appendix
TLV	Threshold Limit Value
TRIS	Toxic Release Inventory System
TPQ	Threshold Planning Quantity
TSCA	Toxic Substance Control Act
TWA	Time-Weighted Average
UC	Unified Command
UCS	Unified Command System
USC	U.S. Code
USCG	United States Coast Guard
USDA	U.S. Department of Agriculture
USFA	U.S. Fire Administration
VA	Department of Veterans Affairs
WMD	Weapons of Mass Destruction
WMD-CST	WMD Civil Support Team
40CFR Part 300	National Contingency Plan

ATHENS COUNTY EMERGENCY OPERATIONS PLAN

Promulgation and Introduction

INSTRUCTIONS ON PLAN USE

In order to execute this plan effectively and mobilize the available resources, implementing personnel must have knowledge of the procedures set forth in this plan and be trained in its use. Response personnel must be fully apprised of the possible hazard effects, understand how these effects would impact local operations and know what their tasks are during emergencies.

The basic plan is a relatively broad conceptual framework and describes the approach to an integrated emergency operations system. It explains the concept of operation for emergency management in this county and describes the organization and responsibilities for emergency planning and operations.

The annexes are components of the plan that contain information on specific functional responsibilities, tasks, and actions that pertain to the function being covered. They are action-oriented and written to guide personnel charged with execution of the plan.

The appendices are hazard specific. They are required when the response to a hazard cannot be addressed generically in the body of the annex. For instance, a slow-building emergency such as flood would require different warning procedures than those for hazards with a sudden onset.

A hazard specific appendix may be attached to the annex it supports or if complex response procedures are required the appendix may be a separate document attached to the EOP.

Tabs and Attachments: Other detailed operational information that support annexes and other appendices appear as tabs or attachments. Tabs support annexes. Attachments support appendices.

Annexes are lettered. Signatures required by each annex are on file in the EMA office.

Appendices are lettered to match the annexes and are sequentially numbered, if attached to Annexes. If the Appendix is a separate document attached to the EOP, it is designated by the title and roman numerals.

Tabs and attachments are numbered starting with 1 for each supported document.

Page numbering: The Basic Plan Uses Arabic numerals throughout, including tabs. Annex pages start with the annex letter, a dash and number (i.e., A-1, A-2) throughout the entire annex, irrespective of the appendices, tabs, and attachments in the annex.